

FRANCHISE LINE CARD



Nuvonix

Discrete (Semiconductor)

Diodes, Rectifier, Transistor, MOSFET, IGBT, Silicon Carbide, LED, TVS, OptoCoupler

Integrated Circuit (Semiconductor)

Linear, Converter, Interface, Power Management IC, Op-Amp, Comparator, Isolator, Driver, CAN, RS485, Sensor, Memory

Microcontroller/Wireless

BLE, Sub 1Ghz, 2.4Ghz, Wireless, LoRA, Transceiver, MCU

Electromechanical

Power & Signal Relay, Switch, PUSH Button, Knob, Fuse, Fan, Heat Sink, Power Supply

Passive

Inductor, Choke Coil, EMC, Transformer, Crystal, Resistor, Potentiometer, Varistor, Thermistor, GDT

Capacitor

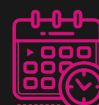
Electrolytic, Film, Ceramic, Tantalum, Polymer, Hybrid, Supercap

Interconnect

Various Connectors



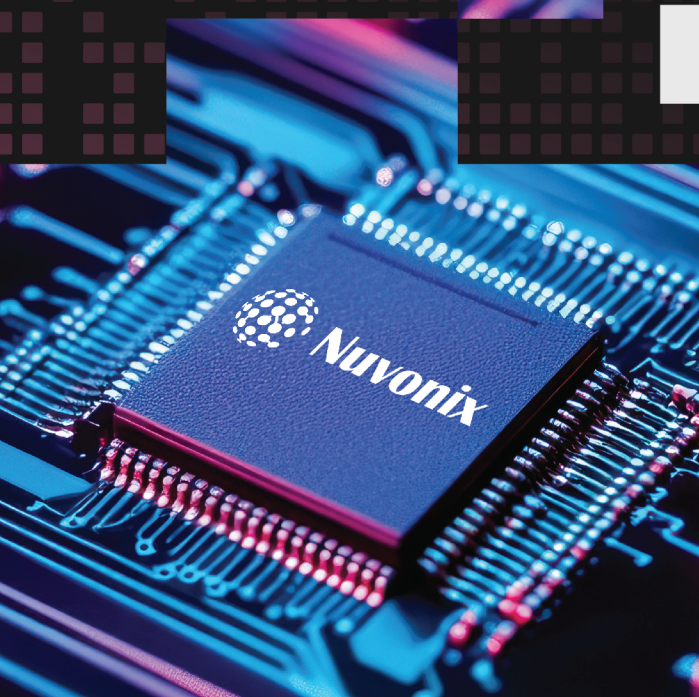
Price Competitive vs. Tier 1 Incumbents



Attractive Lead Times in Standard and Allocated Markets



De-risk Your Supply Chain



FRANCHISE LINE CARD

SEMICONDUCTOR



<https://www.novosns.com/en>

- Isolators
- Amplifiers
- Interface
- Sensors



<http://3peakic.com.cn/En>

- Operational Amplifier / Comparator / Switch
- Converter (ADC / DAC)
- Interface
- Power Management



<http://www.htckorea.co.kr>

- Linear Voltage Regulator
- Switching Voltage Regulator
- Voltage Reference
- LDO / VLCO / ULDO
- Converter



<https://www.awinic.com>

- Audio Driver
- Power Amplifier
- LED Driver
- Haptic / Touch
- RF Switches, Tuner, Amplifiers



<http://www.chipanalog.com/>

- Digital Isolators
- Isolated Interface
- Isolated Power
- Isolated Amplifier & ADC
- Isolated Drivers

MCU/WIRELESS



<https://hoperf.com>

- Wireless RF IC
- LoRA Module
- BLE
- 2.4 GHz Module
- Sensor-Pressure/Temperature



<https://www.socmcu.com/en>

- General Purpose MCU
- Touch Key MCU
- Low Power MCU
- Non-contact Water Detection MCU
- Proximity Sensing MCU

SYSTEMS



<https://www.nvidia.com>

- GPU's
- Cloud and Data Center Services
- Networking & Cloud Solutions
- Embedded Systems



<https://www.pny.com>

- Professional and Consumer
- GPU's
- Memory Drives
- Flash Memory Cards

DISCRETE



<http://www.analogpowerinc.com>

- POWER MOSFET (Low Voltage)



<http://www.goford.cn>

- Trench MOSFET
- Planar MOSFET
- Super Junction MOSFET



<https://www.lgesemi.com/>

- Diode (Rectifier, TVS, Zener, Schottky)
- Transistor (BJT, MOSFET, Digital)
- Bridge Rectifier



<https://www.gmesemi.com>

- Diodes
- Transistors
- MOSFET
- IGBT



<http://www.dacosemi.com.tw>

- Diodes
- Diodes Modules
- MOSFET
- MOSFET Modules



<http://www.invsemi.com>

- IGBT
- IGBT Modules
- IPM



<https://www.amazingic.com>

- ESD > Transient Voltage Suppressors
- Transceiver
- EMI Filter



<https://www.questsemi.com>

- Sic High Voltage Schottky Diode
- Sic High Schottky Diode Die
- Sic High Voltage Mosfet Die

ELECTRO MECHANICAL



<https://strikefan.com>

- Fans
- Blower



<https://www.adlerelectric.com>

<http://www.betterfuse.com>

- Fuse (AC/DC)
- Thermal Fuse
- PV Fuse / DC Switch /EV Fuse



<http://www.yuandean.com>

- Power Supply
- Transformers
- Filters



<https://www.gangyuantech.com>

- Switches (Tactile, Slide, Rocker, Micro, Toggle, DIP)
- Socket (Power Jack, DC Jack, Audio Earphone)



<https://aipupower.com>

- Power Supply
- AC-DC, DC-AC
- Transformers



<http://www.deca-switchlab.com>

- Safety/Limit Switch
- Push in Switch
- Interlock/CAM Switch

PASSIVE



<https://www.firstohm.com.tw>

- Metal Film MELF
- Surge Resistant MELF



<https://coilmaster.com.tw>

- Through Hole/SMD/High current
- Inductor
- Automotive-Grade Inductor
- Ferrite Cores / Ferrite Beads/EMI Filter



<https://www.e-guozheng.com>

- Potentiometer
- Power Resistors



<https://www.dptel.com>

- Clock Module (Crystal, SPXO, TCXO, OCXO, etc.)
- Clock Chip (TC, IC-OC-IC, RTC, ETC)
- RF Component (Circulator, Isolator, Coaxial, etc.)



<https://hkresistor.com>

- Thick/Thin Film Chip Resistor
- Current Sensing Chip Resistor
- Leaded Resistor



<https://www.kingtronics.com>

- Tantalum Capacitor
- Ceramic trimmer
- Aluminum Electrolytic Capacitor
- Trimming Potentiometer
- Diode



<https://www.viking.com.tw>

- Ceramic Capacitor (MLCC)
- Resistor
- Inductor
- Supercapacitor



<https://www.hjc.com.tw>

- Metallized Polyester Capacitor
- Metallized Polypropylene Capacitors
- Power Film Capacitors
- EMI Suppression Capacitors



<https://www.capxongroup.com>

- Aluminum Electrolytic Capacitor
- Conductive Polymer Capacitor
- Hybrid Conductive Polymer



<https://www.songtian-ste.com>

- Ceramic Capacitor (Y1, Y2)
- Film Capacitor (Polyester / Polypropylene)
- Metal Oxide Varistor (MOV)
- NTC Thermistor

MEMORY



www.xsemitron.com

- NOR Flash
- NAND FLASH
- IPDDR4/4X
- DDR3/DDR4 SRAM



<https://lexarenterprise.com>

- Embedded Storage
- SSDs
- Memory Module
- Mobile Memory

RELAYS



<http://www.shori.com.tw>

- Consumer Relays
- Signal Relays
- Automotive Relays



<https://en.sanyourelay.com>

- Consumer Relays
- Power Relays
- Automotive Relays

INTERCONNECT



<https://www.ariba.com.tw>

- FPC Connector
- Modular Jack
- Header Connector
- Board to Board
- USB Connector
- HDMI / SATA / D-SUB



<http://www.greenconn.com>

- Header connector (Pin, Female, Box)
- Board to board (Floating, High Speed)
- Plug Connector
- Wire to Board (Wafer, IDC, PCB Header)
- PCI connector
- I/O Connector



<https://neltron.com.tw>

- Header connector (Pin, Female, Box)
- Board to board (Floating, High Speed)
- Plug Connector
- Wire to Board (Wafer, IDC, PCB Header)
- PCI connector
- I/O Connector



<http://www.tielee.com>

- Terminal Blocks
- Machined parts



<https://www.cztconnectors.com>

- Automotive
- High Speed I/O
- Optical Transceiver
- Modular Jacks/Plugs
- Slot/Edge Card
- Die Case/Cable Assembly



<https://www.ulo-group.com>

- Input Output Modules
- DIN-Rail/Terminal Block
- HDC/Circular
- Electronics & Accessories
- Energy Storage & PV



<https://www.weipuconnector.com>

- Circular Connectors
- Waterproof Connectors
- Industrial Connectors
- Automotive Connectors

OPTO



<https://www.xmhl.com.cn>

- Optocoupler



<https://www.ligitek.com/en>

- Through Hole Eds
- SMD LEDs
- LED display
- Dot Matrix



www.relay.com.tw

- Opto MosFet Relay
- Solid State Relay
- Reed Relay



<https://www.luckylight.cn/en>

- Through hole LEDs
- SMD LEDs
- LED display
- Infrared LEDs



<https://www.letex.com.tw>

- Photo DMos Relay
- PhotoCoupler
- Infrared LEDs
- PhotoInterruptor
- Photovoltaic MOS-FET Driver
- Magnetic Contact
- Reed Relay



Nuvonix

OUR PEOPLE



Product Marketing

5 dedicated product managers driving our vendor relationships and revenue outcomes



Relationships Sales

Over 350 sales people globally managing over 5000 unique customer



FAE Network



Technical Sales

A growing team of Technical Sales in key regions supporting Customer Engineering



Reverse Engineering Team

5 dedicated reverse engineering specialists helping customers and suppliers design in alternative products

LOGISTICS & DISTRIBUTION

United Kingdom

23,392 sq. ft UK Distribution Hub and Enhanced Inspection Facility. Temperature controlled ESD environment

Netherlands

Secondary Warehousing and Logistics

Hong Kong

5,000 sq. ft UK Distribution Hub and Enhanced Inspection Facility. Temperature controlled ESD environment

Singapore

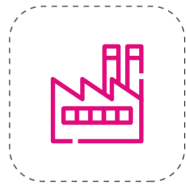
Secondary Warehousing and Logistics

Texas, USA

Secondary Warehousing and Logistics



FRANCHISE BUSINESS SALES



Emerging Brands/
Manufacturers



Price Competitive vs.
Tier 1 Incumbents



Attractive Lead
Times in Standard &
Allocation Markets



Untapped Brand
Marketing Potential



High Quality, High
Reliability & Automotive
Qualified Manufacturers



Complementary Commodity
Mix with Harmonized
Brand Strategy



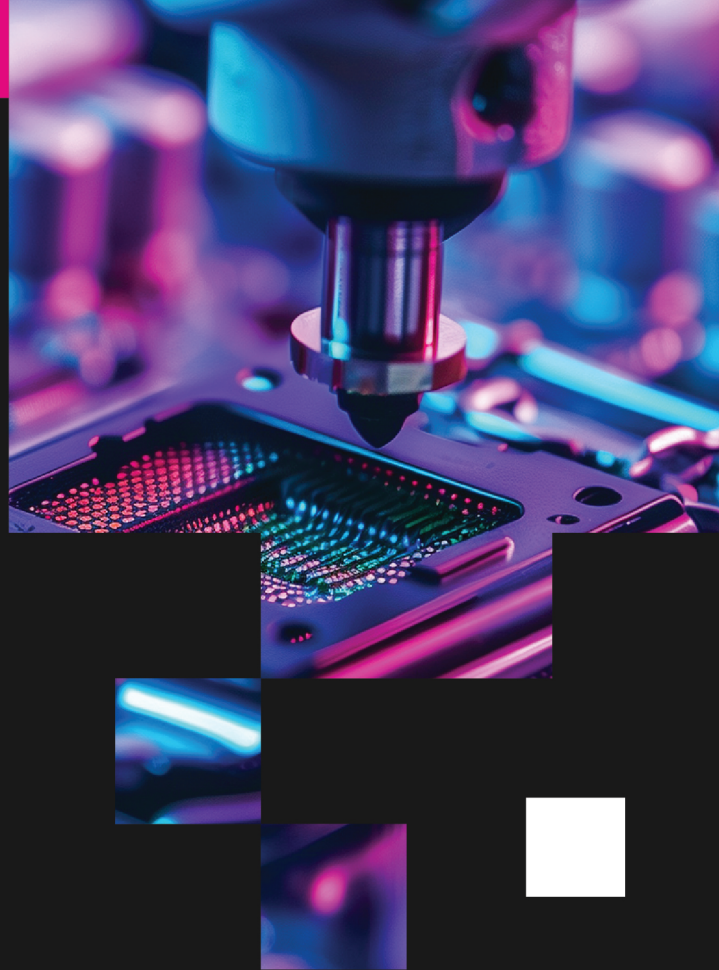
Broad Product
Mix Solutions



Applicable to Broad
Range of Customers
& Applications



De-risk Your
Supply Chain



Nuvonix

Design with confidence.
Source with certainty.
Partner with Nuvonix.



hello@wearenuvonix.com



www.reboundeu.com/nuvonix